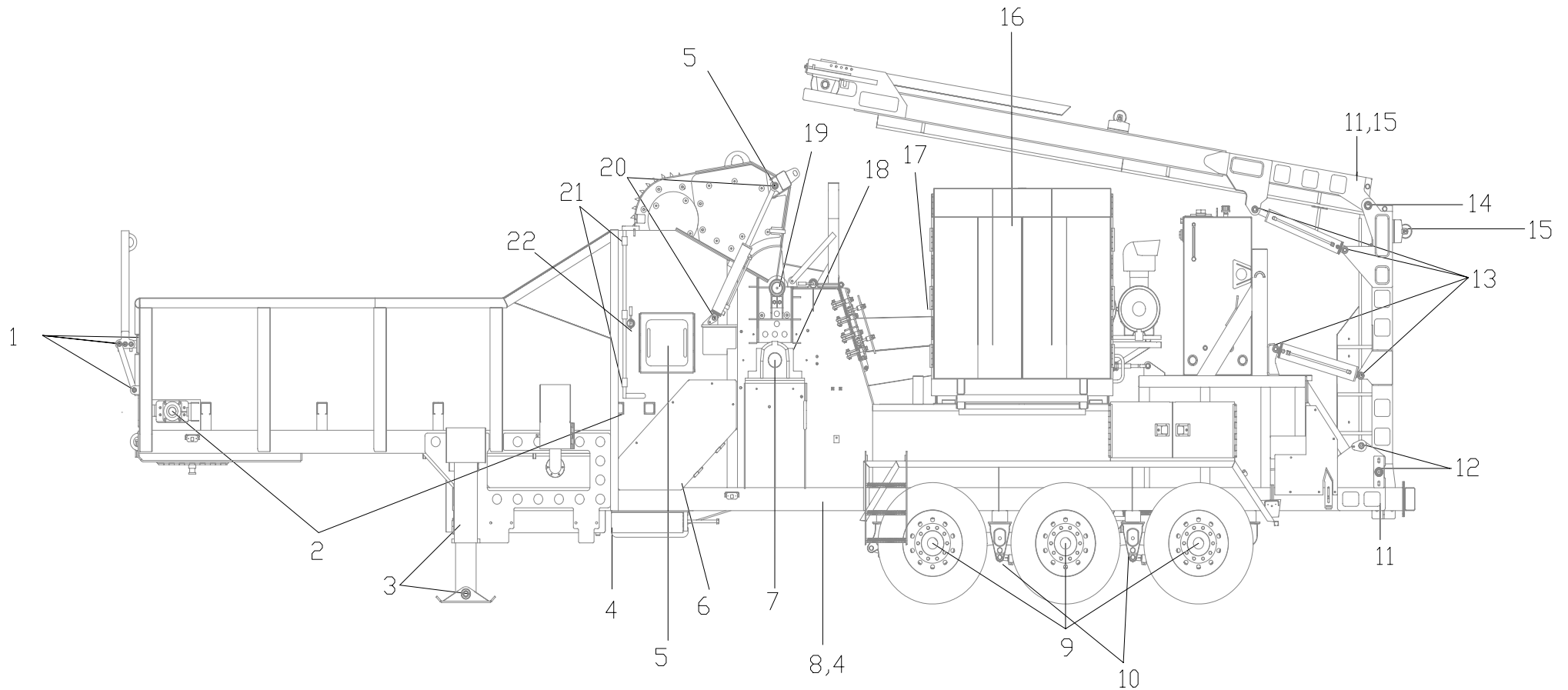


S/N		Morbark Woodhog Daily inspections					Crew Number														
Hour Meter Reading at End of Week		Crew Supervisor Name			Inspected By: Print Name		Week Ending Date														
Daily start up inspection and Every 8 hrs				S	M	T	W	T	F	S	Recommend lubrication		Use only a good #2 EP lithium grease								
				u	n	e	e	u	r	a	S			M	T	W	T	F	S		
				n	n	n	n	n	n	n	u			n	n	n	n	n	n		
Complete machine	visual inspection (condition, leaks)/Clean										Every 8 hrs										
Engine oil	check/increase to full level										Bed chain bearings										
Engine coolant	check, fill as needed										Yoke locks										
Bolts/studs/cap screws (3)	Tighten or Replace if broken										Conveyor Return rolls										
Over center clutch (2)	Check/Adjust/Replace when worn										Yoke/hood pivot										
Wet clutch PTO (6)	Check before starting, increase to full mark										Yoke cylinder										
Hydraulic oil	Check/Increase to 3/4 full										Yoke wheel bearing's										
Engine air filter (1)	Clean when indicator is red										Clutch bearing's										
Radiator (4)	Blow clean with compressed air										Torque limiter	3 shots of good #2 lithium grease daily									
Chain Drives	Check Tension/Replace when worn										inner bearing	8 shots of good #2 lithium grease after disengagement									
Hoses/fittings	Check/fix if Leaky										Torque limiter elements	2 shots to each element w/Mobil xtc grease									
Drive sheaves/belts (3)	Inspect/ if loose tighten to correct tension/replace if worn or damaged										Every 40 hrs										
Every 4 hrs											Conveyor bearings										
Radiator screen (4)	Tap screen and blow out with compressed air										Conveyor cylinder pins										
Engine air pre-cleaner	Tap screen and blow out with compressed air										Conveyor hunge pins										
Inserts	Inspect replace when worn or damaged										Wheel hubs (5)										
Hammers	Inspect replace when worn or damaged										Every 50 hrs										
Anvil	Inspect replace when worn or damaged										After first 50 hrs replace Yoke drive oil										
Rakers	Inspect replace when worn or damaged										After first 50 hrs replace PTO filter element and fluid every 1000 hrs thereafter (6)										
Hammers Rods	Inspect replace when worn or damaged										Every 300 hrs										
Bearings	Inspect replace when worn or damaged										Side load adaptor (2 shots of grease)										
Conveyor Rollers	Inspect replace when worn or damaged										Check feed wheel hub drive (5)										
Chain/sprockets (3)	Inspect replace when worn or damaged										Every 400 hrs										
All Belt (3)	Inspect replace when worn or damaged										Torque limiter elements	tear down inspect, clean, re-set shims and re grease with Mobil xtc grease									
Every 160 hrs											Every 1000 hrs										
Hydraulic pump belts	Tighten to correct tension/Replace if worn or damaged										Stabilizers										
Check Rust inhibitor/Increase to engine manufacture spec's											Mill Bearings Change Grease Completely										
Every 400 hrs											Wet clutch PTO oil / replace (6)										
Hydraulic pump filters	Replace										Every 2000 hrs										
Note: engine oil & coolant spec's are not provided because of the variety of engine's that are put on the machines. See oem manual for there spec's											Replace and fill Hydraulic oil to 3/4 full										
Comments:											Heco gear box's replace gear oil (5)										
											Yoke drive / replace gear oil (5)										
											For Greasing locations Use Diagram on Back Page										
											Inspector's Signature:		Date:								
											legend: G=Good, P=Poor, ~=Does not apply										
DO NOT LEAVE ANY PORTION OF THIS FORM INCOMPLETE																					

Typical lubrication points



- | | | |
|---|---|--|
| 1 In feed extension or Debris curtain | 9 Wheel hubs | 17 Side load adaptor (between radiator & engine) |
| 2 Bed chain drive and idler bearings | 10 Break s-cam's | 18 Torque limiter (opposite side of machine, optional) |
| 3 Stabilizers | 11 Discharge Conveyor idler and drive pulley bearings | 19 Yoke/hood pivot |
| 4 Belly conveyor idler and drive pulley bearing | 12 Conveyor pivots | 20 Yoke cylinders |
| 5 Yoke wheel bearings curb side | 13 Conveyor cylinder pins | 21 Yoke locks |
| 6 In feed drive chain | 14 Conveyor pivot pin | Note: Some doors may have zert also |
| 7 Mill bearings | 15 Discharge conveyor return rolls | |
| 8 Belly conveyor return rolls | 16 Clutch bearing (opposite side of machine) | |

Most lube points are typically found on both sides of the machines